

# The Dispatch

SPRING '01 WWW.NEMETSCHKEK.NET

## President's Letter

*Dear VectorWorks Users,*

*Well, summer is finally here, and while some people wind down and think about vacations, we are working hard to live up to the promises that we have made to you, our customer.*



*Richard Diehl  
Chief Executive Officer,  
Nemetschek North America*

On the tip of everyone's tongue this summer is LANDMARK, our brand new landscaping and site design product. Also newly released, the maintenance updates for VectorWorks, RenderWorks, SPOTLIGHT, and ARCHITECT. And let's not forget our dedicated Mac users; OS X is in the works and an early version was previewed at Macworld New York this summer.

For those of you that have recently upgraded, we have released VectorWorks 9.0.1 as a free update. VectorWorks ARCHITECT, SPOTLIGHT and RenderWorks 9.0.1 are also available as free updates for the current users of those products. I am sure that our longtime users are familiar with our release schedules, but for our newer users, we routinely offer a free maintenance update a few months after a major product release. This time is no different. So if you have been waiting for 9.0.1 to upgrade, now is your chance.

Clearly, we are striving to accomplish the goals that we have set for ourselves, and at the heart of these goals is our commitment to better satisfy your needs. I realize that

many of you were patiently awaiting the release of LANDMARK, so I am pleased to say that it is now available. Some architects have even expressed an interest in LANDMARK. So to fulfill your requests, we will have a bundle package for the designers that want it all at an affordable price.

Finally, our engineering department has been fervently working with Apple to offer a Carbon version for OS X. Unfortunately, it has taken a little longer than expected. However, we demonstrated a preview development version at Macworld in July. If you were unable to make the trip to New York, never fear; we posted a website for OS X that will chart our progress.

As always, I would like to thank you for your loyal support, your insightful feedback and your patience. We wouldn't be able to do it without you.

Sincerely,

  
Richard Diehl  
CEO, Nemetschek North America



## Renowned 860 Sq. Ft. Mini House De



*The Mini House, designed by Yoshiharu Tsukamoto and Momoyo Kaijima of the Atelier Bow Wow architectural firm in Tokyo.*

The 860 square foot Mini House, designed by Yoshiharu Tsukamoto and Momoyo Kaijima of the Atelier Bow Wow architectural firm in Tokyo, demonstrates the potential of small lots over the world. "We tried to turn the fluid aspect of the surroundings, which are not exactly unusual for Tokyo, into a positive characteristic," Tsukamoto said. "We think this surface study has value in investigating communication between the house and the existing urban environment." Tsukamoto added that: "Computer-aided design plays an important part in my work. The CAD system that I used, VectorWorks from Nemetschek, made it possible to investigate the interplay with the surrounding neighborhood with a minimum of hassle."

The site of the Mini House itself is surrounded by a small street to the eastern face, a private access lane to the south, and a field put aside for future metropolitan ring road construction to the west. "This dense residential district is losing its urban structure along the old Kawagoe Highway because of the recent redistricting plan," Tsukamoto said. "In fact, it is very difficult to imagine what will actually happen on this western side. In addition, like much of the rest of Tokyo, this lot is very small. But despite its fluid and unstable environment, the building must deal directly with its reality. The sense of distance between architecture and the urban environment becomes an inescapable question. The most important issue was to prepare an orientational sensibility that can disperse beyond the site. We started by trying to turn the fluid aspect of the surroundings into a positive characteristic, since this is such a typical situation for Tokyo."

*"We think this surface study has value in investigating communication between the house and the existing urban environment." says Architect and Designer Tsukamoto of the Mini House.*



"We took care to not limit the active site response to any single face of the house," Tsukamoto continued. "We offset the building from each site limit, and pushed out subvolumes towards the fenceless boundaries. The result is a three-story house with multiple fronts. The fine steel structure fully utilizes the floors and perimeter walls of the building. There is no overriding post and beam framework, so we were free to make openings and protrusions in any location on these structural surfaces. The elastic surface allows a siting method of extending arms in four directions and eyes in more directions. Through interpreting the surroundings, we can study at the same time both the needs

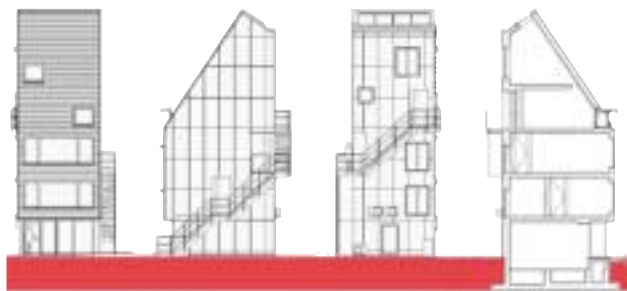
## emonstrates Potential of Small Lots

of the internal layout and the activation of the exterior. We think this surface study has value in investigating a communication between the house and the existing urban environment. What it means to build residential housing in Tokyo permeates through the interior and exterior interdependencies at Mini House."

A large number of design iterations were required to produce this unique design. Each iteration began with a two-dimensional sketch that Tsukamoto created in VectorWorks. In order to define geometry, most CAD packages require that the element be selected first, then the command issued; others require that the command be issued, then the element selected. These systems require a considerable amount of time and effort to define basic geometry, which interferes with the conceptual development process. VectorWorks, on the other hand, provides a SmartCursor that snaps onto nearly any significant geometric feature, streamlining the process of generating a design from basic geometric shapes. The SmartCursor automatically identifies relationships like endpoints, midpoints, center points, tangencies, and real and extended intersections.

If Tsukamoto wants to connect a line to the midpoint of another line, for example, all he has to do is move the cursor in the general vicinity of the midpoint, then when a "midpoint" cue appears, click the mouse. The program does the work of maintaining alignments and ensuring that geometry is precise, freeing the user to concentrate

on functionality of the design. Besides this powerful feature, the interface of the VectorWorks package is generally more intuitive than other CAD programs. In VectorWorks, elements, commands, and snap-to-grid or object options are all available as mouse clicks and single keystrokes and the order of execution is usually not an issue. The designer can turn tools on or off, pop up palettes, change line types, and modify objects instantly and intuitively.



Tsukamoto also takes advantage of VectorWorks' easy-to-position working plane to place individual components on different elevations. The software makes it possible to drag the working plane around in 3D with the mouse, rather than making it necessary to go to a plan view and specify the location there. The ease of making changes to the computer model encouraged Tsukamoto to keep fine-tuning the Mini House design until he achieved the current award-winning design. He believes his use of CAD made this design better than if he had used traditional design methods, in part because it gave him time to try many options. CAD also improved the design by giving Tsukamoto a better understanding

of the appearance of the Mini House in relation to its surroundings than he would have gotten from concept drawings or physical models. "Working with VectorWorks is as easy as working with pencil and paper yet it provides a mathematical level of precision," Tsukamoto concluded.

To read this case study in its entirety, visit [www.nemetschek.net/news/casestudies.html](http://www.nemetschek.net/news/casestudies.html)

*"We took care to not limit the active site response to any single face of the house. We offset the building from each site limit, and pushed out subvolumes towards the fenceless boundaries. The result is a three-story house with multiple fronts."*

### Editor's Note

Do you have a project that you are especially proud of? Would you like to show it off? Now is your chance. We will have a customer profile in every issue of *The Dispatch*, and these case studies can also turn up in magazine articles. Interested users should send an e-mail to [deirdre@nemetschek.net](mailto:deirdre@nemetschek.net) for consideration.



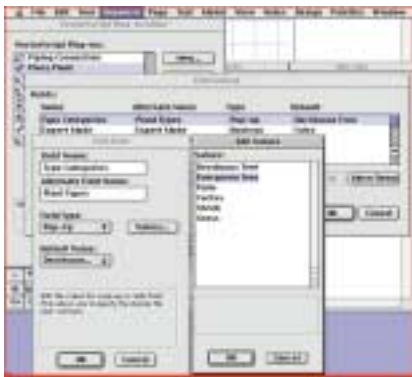
## Tutorial Bytes

### VectorWorks—Did You Know?

Did you know that the backspace and delete keys remove the most recently created point during the creation of a multi-point object—like a polyline, polygon, or walls? Another cool tidbit is that the escape key restores the original tool points during a resize operation, and aborts a tool during object creation.

### RenderWorks

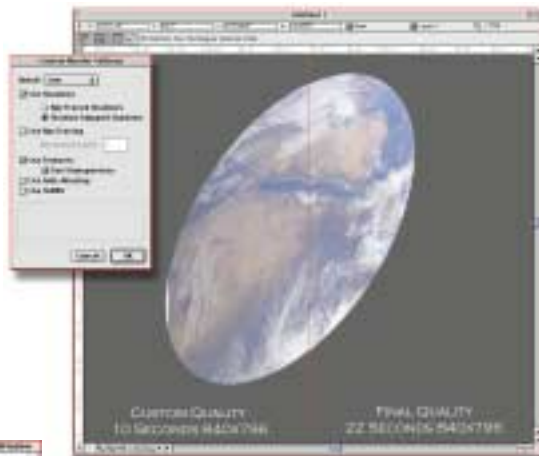
Brian Oosterwyk from Tech Support demonstrates how to use the Mask Image feature in RenderWorks. Learn how to add a real person against a filled solid 3D object to your drawing. Brian also shows you how to view a tree from different angles. For the complete tutorial visit, [www.nemetschek.net/support/technotes/how\\_to.html](http://www.nemetschek.net/support/technotes/how_to.html)



Frank Brault explains how to add a new category to the plant Types list in the on-line LANDMARK tutorial.

### SPOTLIGHT

The SPOTLIGHT User's Guide includes instructions for how to set your RenderWorks settings to get the best results while using the gobo projector and visualization tools. For quick checks of projections, or while finalizing the projections, waiting for final quality renderings to complete can be time consuming. Here are settings optimized to provide the best rendering speed while still projecting the gobo patterns.



Check out "The Dispatch" on the web for details on cutting the rendering times for your gobo projections in half.

### LANDMARK

LANDMARK creator, Frank Brault, shows you how to customize the plant database type categories. To get the full scoop on the tutorial, check out [www.nemetschek.net/support/technotes/how\\_to.html](http://www.nemetschek.net/support/technotes/how_to.html)

### Add-On Products & Services

On the Nemetschek N.A. website, you can find up-to-date information on Third Party Products and Services, including information on trainers, service bureaus, and add-on products.

**Add-on Products:** We provide a list of third-party add-on products that are general purpose and specific to the fields of landscape design, architecture, theatrical lighting, and mechanical engineering.

**Distributors:** We offer products through distributors both here in the U.S., as well as internationally.

**Trainers:** Here you can find a geographical list of trainers.

**Training Material:** We offer information on how to obtain VectorWorks training books and CDs.

**User Groups:** We have a vast number of user groups in the U.S., as well as abroad.

**Plotting Services:** Here you can find a complete list of companies providing plotting services.

**Employment:** If you're looking for a designer with VectorWorks experience, or are a VectorWorks user looking for employment, check out the employment page.

### Contact Us

**Call Us** at 410-290-5114 to speak to customer service or technical support.

**Fax Us** at 410-290-8050.

**Visit Us** on the web at:  
[www.nemetschek.net](http://www.nemetschek.net)

**For Ordering and Pricing Information** call 1-888-646-4223, or e-mail [sales@nemetschek.net](mailto:sales@nemetschek.net)

**E-mail** questions about upcoming shows, User Group events or any marketing concerns to [marketing@nemetschek.net](mailto:marketing@nemetschek.net)

**E-mail** your technical questions, solutions, and wish list items to technical support to [tech@nemetschek.net](mailto:tech@nemetschek.net)



## News Bytes

### VectorWorks 9.0.1

VectorWorks 9.0.1 is here! Improved functionality, problem fixes and some new features can be found in this maintenance update. Printing anomalies such as plotting rotated text on the Mac, disappearing objects, and postscript errors are fixed in 9.0.1. It also offers general Mac performance improvements, and improves the use of Windows resources. This is a FREE update, which you should have received by now if you are a registered VectorWorks 9 user. If you have not received your update, contact customer service at 888-646-4223.

### RenderWorks 9.0.1

RenderWorks users will find that 9.0.1 requires much less memory to render than the original 9.0 version. Other changes in RenderWorks 9.0.1 consist of better control over textures mapping and enhanced anti-aliasing. Rendering support for NURBS has also been improved in this maintenance update.

### SPOTLIGHT 9.0.1

While SPOTLIGHT will benefit from all of the changes in VectorWorks 9.0.1, it also has a few surprises. SPOTLIGHT now features a seating layout command, editable work sheets and an updated instrument library with European and metric measurements. To learn more about SPOTLIGHT 9.0.1, visit [www.nemetschek.net/spotlight](http://www.nemetschek.net/spotlight)

### ARCHITECT 9.0.1

Like SPOTLIGHT, ARCHITECT incorporates all of the improvements in VectorWorks with some of its own new features and enhancements. ARCHITECT now frames dormers and gables and it even provides material take-offs for floors and rafters. Other improvements include: DOE export, handling of metric units, file transfers between ARCHITECT 8 & 9, and solar animations. To learn more about ARCHITECT 9.0.1, visit [www.nemetschek.net/architect](http://www.nemetschek.net/architect)

### LANDMARK

The ultimate landscape and site design tool, LANDMARK takes full advantage of the core CAD capabilities in VectorWorks 9.0.1 while offering its own suite of valuable tools and functions. LANDMARK provides: sophisticated 2D drafting, powerful 3D modeling, advanced site and modeling analysis, site documentation, easy-to-use scripting language, Issue Manager, Plant Manager, powerful production and detailing features, as well as new tools for irrigation design. Plus, LANDMARK ships with hundreds of 2D and 3D customizable plant objects. For the full story on LANDMARK, visit [www.nemetschek.net/landmark](http://www.nemetschek.net/landmark)

*For those of you who haven't seen the "Smart Car", these little two-seaters with replaceable body panels are very popular among the European population.*

### Smart Car

Our German distributor sent us this picture of a "Smart Car" that is used by one of their VARs for advertising. For those who are not familiar with them, these are little two-seaters with replaceable body panels that are popular in Europe. What a cool idea. Hey Rich, maybe we should get one?!

### AIAS (American Institute of Architecture Students)

We are proud to be sponsors of the AIAS, which is the student division of the AIA. We attended its Grassroots Conference in late July, and we look forward to exploring many new avenues with the AIAS. After all, today's student is tomorrow's designer. Look on our website for more details about our involvement and see what we have planned for the future.

### New Third-Party Products

The Guild announces VectorWorks 9-to-Filemaker 5 data linking via its new series of CADmgr plug-ins. For more information, visit [www.theguild.com](http://www.theguild.com). Also, Zygote is pleased to introduce 3D PopulationWorks, a new CD collection of over 1,800 3D Human models. The models average 850 polygons and come posed, ready-to-use in 79 categorized VectorWorks scenes. [www.zygote.com/vectorworks](http://www.zygote.com/vectorworks). Last but not least, Object Online has renewed its support for VectorWorks Objects. To learn more, visit [www.objectsonline.com](http://www.objectsonline.com)

# Tradeshow & Events Calendar



## USA Trade Shows

**September 22–24**

ASLA  
Montreal, Canada

**September 27–29**

Custom Home 2001  
Baltimore, MD

**October 11–13**

JLC Live  
Las Vegas, NV

**November 2–4**

LDI  
Orlando, FL

**November 13–15**

Build Boston  
Boston, MA

## Training

The PLS Training Tour finished its first year and was a tremendous success. To that end, we plan on launching another tour that kicked off right here in Columbia this July. Tentative dates and locations will be posted on our website, so be sure to visit [www.nemetschek.net/pls](http://www.nemetschek.net/pls) to see when we'll be in your area.

**July–Columbia**

**August–San Francisco**

**September–Chicago**

**October–Los Angeles**

**November–Providence or New York City**

**December–Seattle**

**January–San Francisco**

**February–Houston**

**March–Columbia**

**April–Chicago**

**May–Providence**

**June–Los Angeles**

\*If you are interested in any of our seminars, please call 888-646-4223

## International Upcoming Events

**2001.09.16-18**

OMNIGREEN  
Kortrijk, Hallen  
Belgium  
<http://www.mopro.be/NL.html>

Distributor: Design Express

**2001.09.20-22**

Maxpo  
Köln, Coloneum  
Germany  
<http://www.maxpo.de/>  
Distributor: ComputerWorks

**2001.09.25**

IT Showcase  
Luton—Vauxhall Recreation Centre  
United Kingdom  
[www.itshowcase.co.uk](http://www.itshowcase.co.uk)  
Distributor: Gomark

**2001.09.25-28**

Orbit Comdex  
Messe Basel, Basel  
Switzerland  
<http://www.messebasel.ch/orbitcomdex/>  
Distributor: ComputerWorks

**2001.09.26-27**

CADCAM  
Kortrijk, Hallen, Belgium  
AEC—MEC General  
<http://www.bab.be/cadcam>  
Distributor: Design Express



7150 Riverwood Drive, Columbia, MD 21046

Helpful, insightful news and updates...on the web!