

The Dispatch

SPRING '01 WWW.NEMETSCHKEK.NET

President's Letter

Dear VectorWorks Users:

Although we have only just completed the first quarter of 2001, this is already shaping up to be our best year to date. The reason for this is mainly the achievement of our longtime goal of having a full line of industry-specific products.



*Richard Diehl
Chief Executive Officer,
Nemetschek North America*

As one of the very few companies on the Windows platform, and the only one on the Mac to offer a line of vertical market CAD products, we are ecstatic about the release of VectorWorks 9 and its Industry Series.

We spent 16 years refining VectorWorks, placing it in direct competition with more expensive products. Still, we realized that we are not able to effectively meet all of your varied demands in one general-purpose CAD product. This realization, prompted by your requests, led us to where we are today, with a complete series of products intended to address your specific needs in the fields of AEC, entertainment design, and landscaping. You asked, we answered. Thus, we have the birth of the VectorWorks Industry Series.

Some of you have expressed concern about whether or not VectorWorks will disappear with the introduction of this product line. The answer is very simply, no. Every one of these new products incorporates all of VectorWorks' general-purpose CAD functionality. The features and functions that you have come to appreciate in VectorWorks now serve as the backbone for each and every product in the Industry Series. You will reap the benefits of the advanced CAD

technology introduced in VectorWorks 9, in all of the Industry Series products. You will appreciate our improved 3D technology, 2000i DWG support, and the improved interface enhancements that simplify standard modeling and drafting tasks.

The first product in our Industry Series, ARCHITECT 9, is generating widespread excitement with its advanced feature set and extensive tool and object libraries. The recent release of SPOTLIGHT has created so much demand for the product, that we have every reason to believe that before long it will become an industry standard. We have equally high expectations for the soon-to-be-released LANDMARK. So as you can see, 2001 is turning out to be a very exciting year.

As always, I would like to thank our users for their unwavering support and input, and for allowing us to continue to serve you in the best way we know how—by providing you with state-of-the-art CAD technology at a very reasonable price.

Sincerely,

A handwritten signature in black ink, appearing to read 'Richard Diehl'. The signature is fluid and cursive, written over a white background.

Richard Diehl
CEO, Nemetschek North America



What's New



Oceanfront residence designed by Dan Jansenson of Dan Jansenson Architects, Santa Monica, California. Created in VectorWorks ARCHITECT, and rendered in RenderWorks.

VectorWorks 9

Two years in the making, VectorWorks 9 is hands down, the most stable and accurate version ever. Rock-solid stability and pinpoint accuracy come from a new CAD engine that supports floating point values. VectorWorks 9 also features tremendous improvements in 3D modeling, including NURBS that allow you to easily create complex curves. Other 3D changes include Extrude Along a Path, Taper Extrusion, Editable Wall Sills, and Support for OpenGL on both Mac and Windows. New parametric constraints allow you to add intelligence to your drawings by establishing relationships between objects. VectorWorks 9 offers better support for text with Spelling Checker, Find and Replace, and a Call-out Tool. You will also find an improved Hatch Dialog Box, 2D/3D Lasso Selection Tool, Associative Dimensioning, and best of all, support for AutoCAD 2000i.

Interface improvements include:

- Tool Undo ■ Restore and Switching
- Toolbar Docking ■ Boomerang Mode
- Improved Layers Dialog Box
- Print Current View ■ Control over Printing Fills ■ New Undo View Changes
- Retrieve Selection

Finally, our bonus drafting tools include:

- Select Wall Type ■ Date/File Stamp ■ Detail Marker ■ Drawing Label ■ Elevation Marker
- Room Name ■ Scale Bar ■ Section Marker
- Drawing Border ■ Polar and Rectangular Grid ■ Shaft Break Tool ■ Slot Tool

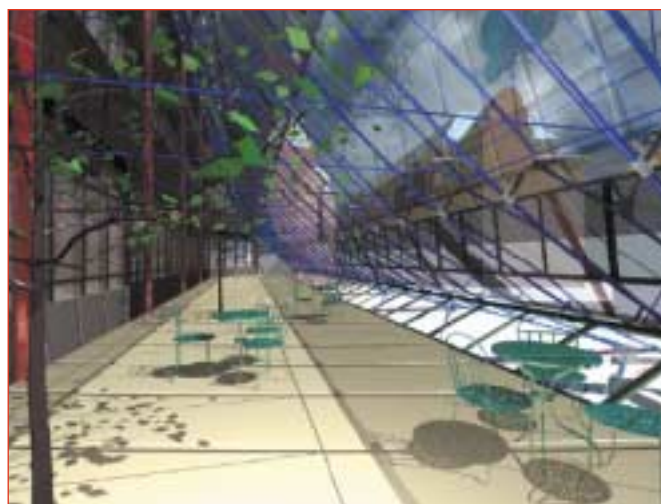
It was worth the wait. For a complete feature set, visit www.nemetschek.net/vectorworks

RenderWorks 9

RenderWorks 9 is the must-have presentation tool for all VectorWorks products. New features and improved capabilities give you even more power and control. An improved rendering engine means that images render twice as fast and with an even higher degree of realism.

RenderWorks 9 now offers a new Edit Mapping Dialog Box that makes it even easier to control and map textures. With Zoom-in, Zoom-out, and Pan Tools, you can really scrutinize your image from every angle. With the Re-size Tool, your image can be whatever size you need it to be. The Edit Texture Dialog Box allows you to create an infinite range of textures. Color, Reflectivity, Transparency, and Bump are all user definable, so textures can take on any color, be as shiny or as dull, as transparent or as opaque or as rough or smooth as you want. RenderWorks 9 provides rendering

Energy- and resource-efficient redesign of HEW customer center in Hamburg, Germany. Design by Greg Kiss of Kiss + Cathcart, Architects, New York, New York. Created in VectorWorks, and rendered in RenderWorks.



support for NURBS, so you create curved surfaces even better. Let's not forget support for LightWorks classic and OpenGL rendering engines. Last, but not least, now you can share your VectorWorks designs over the web. You can easily export any designs as VRML files. It's as simple as that. For the complete feature set, visit www.nemetschek.net/renderworks

ARCHITECT 9

VectorWorks ARCHITECT is the essential design tool for today's architect. Brimming with new features and function, ARCHITECT provides high-end CAD capabilities at only a fraction of the cost of other CAD packages. It has all of VectorWorks' core technology making you that much more productive and efficient. ARCHITECT 9's new MEP module integrates new tools for designing and documenting HVAC, piping, plumbing and electrical building systems. The Framing Suite now lets you frame floors, walls and roofs automatically. Existing ARCHITECT users will be delighted to find that you can either use the standards found in ARCHITECT or define your own; you have complete flexibility.

ARCHITECT also includes: ■ Exterior Wall Dimensioner ■ Seating Layout Command ■ Tile Command ■ Create Drawing List Command ■ Improved Property Line Tool ■ Modify Layers and Classes ■ New Text Notes Tool ■ Improved ID Tools ■ Improved Door and Window Objects ■ New Print Sheet Command ■ New Custom Selection Command

For the complete feature set visit, www.nemetschek.net/architect

LANDMARK 9

The ultimate in landscape and site design, VectorWorks LANDMARK has it all: VectorWorks' sophisticated 2D drafting, powerful 3D modeling combined with professional tools for site and landscape design. Increased productivity without limited creativity, what could be better?

With LANDMARK, you can easily document your site by importing survey data or modify it just as easily with "intelligent" parametric objects like drives, walks and pads. Plant selection and inventory management is a cinch with the Plant Manager. Plus, powerful production and detailing features make it easy to create plans, details, and other working drawings.

LANDMARK features include: Advanced site/terrain modeling capabilities ■ Powerful plant layout and management tools ■ An extensive library containing hundreds of landscape, hardscape, and site design objects ■ Flexible tools for irrigation layout ■ Unique project management features ■ Compelling 3D visualization and animation features ■ Support for AutoCAD 2000i

For the complete feature set, visit www.nemetschek.net/landmark



Design by John Altorio of Altorio Design Consultants, Ontario, Canada. Created in VectorWorks.

SPOTLIGHT 9

VectorWorks SPOTLIGHT merges sophisticated 2D drafting and powerful 3D modeling with advanced lighting design and production tools. Now it's easy to create light plots, place set and scenic elements on stage, automate reports and schedules, and visualize design concepts in 3D. With SPOTLIGHT, plug-in objects make it easy to create common design elements. Advanced Instrument Objects allow complete customization of labels, beams to be drawn in 2D and 3D, instrument data tracking, and automatic generation of keys to instrumentation. You can easily generate Magic Sheets and generate advanced paperwork directly from your designs. Moving lights, color changes, and gobo projections make presentation and visualization a breeze. Define your own gobo projection or choose from one of the 2,000 pre-configured gobo patterns from Apollo, Gam, Lee, and Rosco. SPOTLIGHT also gives you access to over 400 standard Instrument Objects and symbols from more than 15 leading manufacturers like Altman, ETC, Martin, and Vari-Lite. Best of all, support for DXF/DWG allows you to import AutoCAD drawings (v2-2000i) and export SPOTLIGHT data into Lightwright for further analysis. You can re-import the refined data and SPOTLIGHT will automatically update your plots. What could be easier? For the complete feature set, visit www.nemetschek.net/spotlight

Tutorial Bytes

VectorWorks ARCHITECT 9

Charles Chandler, VectorWorks ARCHITECT 9 Product Lead, shows off the new auto-dimensioning feature. This handy new feature creates all of the dimensions for the exterior of the building and includes building overall dimensions, wall change dimensions, and window/door dimensions. To learn more, visit www.nemetschek.net/support/technotes/arch_dim.html

VectorWorks 9

Did you know all tools in VectorWorks 9 can now be paused and resumed using the new Boomerang mode? You enter and exit Boomerang mode by pressing and releasing the space bar. Steve Johnson, VectorWorks Engineer, shows us how to take advantage of this cool new feature. Check it out at: www.nemetschek.net/support/technotes/boomerang.html

VectorWorks LANDMARK 9

Frank Brault, VectorWorks LANDMARK Lead, walks you through LANDMARK with this comprehensive tutorial. Learn how to use the DTM and other new features. For the tutorial in its entirety, visit www.nemetschek.net/support/technotes/landmark.html

RenderWorks 9

Learn how to edit the workspace to place the Bitmap tool onto a palette. Brian Oosterwyk from NNA Technical Support shows you how and explains how you use less memory to print a rendered drawing. For the full tutorial, visit www.nemetschek.net/support/technotes/bitmaptool.html

VectorWorks SPOTLIGHT 9

In this month's issue of *The Dispatch*, Kevin Moore, VectorWorks SPOTLIGHT Product Lead, will provide a how-to that demonstrates the easy creation of your own multi-circuit lighting symbols and how to adapt your current symbol library for use in SPOTLIGHT. To learn more, see www.nemetschek.net/support/technotes/lightsymbol.html



Check out Kevin Moore's tutorial to learn how to customize SPOTLIGHT for your needs.

Add-On Products & Services

On the Nemetschek N.A. website, you can find up-to-date information on Third Party Products and Services, including information on trainers, service bureaus, and add-on products.

Add-on Products: We provide a list of third-party add-on products that are general purpose and specific to the fields of landscape design, architecture, theatrical lighting, and mechanical engineering.

Distributors: We offer products through distributors both here in the U.S., as well as internationally.

Trainers: Here you can find a geographical list of trainers.

Training Material: We offer information on how to obtain VectorWorks training books and CDs.

User Groups: We have a vast number of user groups in the U.S., as well as abroad.

Plotting Services: Here you can find a complete list companies providing plotting services.

Employment: If you're looking for a designer with VectorWorks experience, or are a VectorWorks user looking for employment, check out the employment page.

Contact Us

Call Us at 410-290-5114 to speak to customer service or technical support.

Fax Us at 410-290-8050.

Visit Us on the web at: www.nemetschek.net.

For Ordering and Pricing Information call 1-888-646-4223, or e-mail sales@nemetschek.net

E-mail questions about upcoming shows, User Group events or any marketing concerns to marketing@nemetschek.net

E-mail your technical questions, solutions, and wish list items to technical support at tech@nemetschek.net

News Bytes

VectorWorks 9 Celebration

To help us celebrate the release of VectorWorks 9 and its Industry Series, our new CEO of Nemetschek AG flew over to uncork the champagne. Gerhart Merkel, assuming the day-to-day responsibilities of the retiring Professor Nemetschek, was previously the European managing director of NEC Mitsubishi Display Systems and has worked very successfully in different executive positions in the international IT industry. Mr. Merkel received a warm reception by Nemetschek North America employees, and shared their enthusiasm about the future of NNA, VectorWorks 9 and its Industry Series.

Yourope

Yourope, the European architectural competition sponsored by VectorWorks, was a tremendous success with more than 1,800 students worldwide registered. The award celebration is being held on May 19, 2001, and will kick off a touring exhibition that will begin in Brussels before heading to Berlin in May/July 2001. The following VectorWorks distributors have contributed a great deal to the success of this competition: ComputerWorks, Germany and Switzerland; Design Express, Luxembourg Belgium and the Netherlands; Ultirender Ltd., Finland; Cesyam, France; Rainbow Computers SA, Greece; Gomark, United Kingdom; VideoCOM, Italy; Dakantus, Norway; and TechLimits, Portugal. To learn more, visit www.nemetschek.net/yourope

Foremost Audio-Visual Firm Standardizes on VectorWorks SPOTLIGHT

AVW Audio-Visual, Inc. has chosen VectorWorks SPOTLIGHT as the CAD standard for its offices. One of the world's largest audio visual companies, AVW has 12 full-service branch locations, 3 sales offices and over 600 employees nationwide. AVW, a premiere provider of audio visual and presentation technology services, states that SPOTLIGHT will aid in the design and layout of their equipment for special events, expositions, and conventions like Siggraph. To read the entire press release, visit www.nemetschek.net/news/pressreleases/022801.html

Mac OS X

Our Mac enthusiasts will be glad to know that our engineers are working feverishly on our OS X Carbon version of VectorWorks. A downloadable beta will be available on our website late spring, early summer. What is even more exciting is that this will be a FREE update for users that have already upgraded to VectorWorks 9. So if you have been waiting for OS X, hurry and upgrade to be among the first to get the OS X update.

Nemetschek North America Expands International Reach

Our impressive list of international distributors just keeps growing. We have added Tech Limits of Portugal and Nemetschek España to our distributor network. Each firm offers unique growth opportunities for VectorWorks 9 and its Industry Series. Tech Limits and Nemetschek España are committed to making VectorWorks the

best-selling CAD program in the world. For a complete list of international distributors, visit www.nemetschek.net/sales/International.html

Fantastic News for Students

NNA and Academic Distributing are thrilled to announce new student pricing. Students will be delighted to know that they can now purchase VectorWorks for only \$95. What a deal! To learn more about this fabulous new pricing, contact Academic Distributing, 800-531-3227, or e-mail them, Sales@academic-wholesale.com

User Groups

Also growing by leaps and bounds is our collection of user groups. Upstate New York (www.kingarch.com/unyvwug.html), Michigan and Southern California have recently been added to our user group family. Looking to form new groups are South Florida and Illinois. If you are from these areas, and would like more information, please check out our website at www.nemetschek.net/support/usergroups.html

New Additions at NNA

Our family is growing to keep up with our growing product line. We are proud to introduce Henry Clark, as our new Controller for our accounting department. And, to help us market all of these new products, Linda Pacylowski has joined our marketing team as our new Mar/Com Coordinator. We have also beefed up our sales department; Aesop Robinson and Michael Early have joined our sales team.

Tradeshow & Events Calendar



USA Trade Shows

May 17–19 (Booth #1734)

AIA Expo
Denver, CO

June 19–21 (Booth #2405)

A/E/C Systems
Chicago, IL

July 18–20

Macworld New York
New York, NY

July 25–2 (Booth #2127)

PCBC (Pacific Coast Builders
Conference)
San Francisco, CA

The 2001 Professional Learning Series Tour

Nemetschek North America, in conjunction with In Medias Res, is offering hands-on VectorWorks training seminars across the country. The Professional Learning Series provides expert instruction in state-of-the-art computer labs. The seminars feature two and three days of intensive training. Courses include: Introduction to VectorWorks ■ Advanced VectorWorks ■ VectorWorks 3D Concepts. For more information, visit www.nemetschek.net/pls

May 7–8

Minneapolis, MN
Guidant Corporation
Intro to VectorWorks

May 18–19

Portland, OR
Portland State University
Intro to VectorWorks

May 30–31, June 1

Los Angeles, CA
UC Irvine Extension Learning Center
Intro & Advanced VectorWorks

June 7–8

Denver, CO
Front Range Community College
Westminster Campus
Intro to VectorWorks

International Upcoming Events

2001.05.07

HP-Vertical Solutions
Amsterdam, De Valk, Netherlands
Distributor: Netherlands Design Express

2001.05.21–25

LIGNA Plus Hannover, Deutsche
Messe Germany
[www.globis.de/supplier/lg01/html/
main_fs_d.html](http://www.globis.de/supplier/lg01/html/main_fs_d.html)
Distributor: ComputerWorks

2001.05.22

IT Showcase
Derby—Pride Park Stadium
United Kingdom
www.itshowcase.co.uk
Distributor: Gomark

2001.06.02

IT Showcase
Belfast - Kings Hall
United Kingdom
www.itshowcase.co.uk
Distributor: Gomark

2001.06.19–22

CAT Bau
Stuttgart, Messe Killesberg
Germany
[http://messe-stuttgart.de/catbau/2001/
deutsch/index.htm](http://messe-stuttgart.de/catbau/2001/deutsch/index.htm)



7150 Riverwood Drive, Columbia, MD 21046

BULK RATE
U.S. POSTAGE
PAID
BALTIMORE, MD
PERMIT #2973

Helpful, insightful news and updates...on the web!