



Architect

**Henn Architects:
Built for Speed
with VectorWorks
Architect**

VectorWORKS®



©H. G. Esch, Gläserne Manufaktur Dresden

For Henn Architects, it's often a race against the clock to submit complex proposals for the large contracts the firm gains by winning competitions. With little time and a lot to show for clients that include Audi, BMW, Porsche, and Volkswagen, the firm credits the speed, flexibility, and intuitiveness of VectorWorks Architect for helping drive their success.

For international firm Henn Architects, winning projects through competitions and working with foreign contractors comprises a large part of their business. Speed is critical when it comes to getting work done. Speed, flexibility, and intuitiveness come standard in VectorWorks Architect. And VectorWorks Architect has been the firm's software solution for 12 years, helping them create winning proposals and presentations just in time, every time.

The firm's portfolio includes projects for several high-end automobile manufacturers: the Audi Research Center, the BMW Research & Innovation Center, the glass manufacturer for Volkswagen AG, and the Auto City in Wolfsburg, a 62-acre complex celebrating the history of the automobile, which is a popular tourist attraction. Various other assignments are international in scope and consist of a variety of projects, from large master plans to interior design.

Intuitive and unbeatable

Working quickly and intuitively with CAD standards in VectorWorks enables Henn Architects to finish designs, 3D models, and visualizations under tight time constraints.

"Our most convincing argument for choosing VectorWorks Architect is its intuitiveness," explains Christian Bechtle, leader of the firm's design department. "We can quickly and easily design exactly what we envision, no matter how complex. VectorWorks Architect is the perfect tool for us."

"VectorWorks Architect is the perfect tool for us."

He finds the way layers and classes work together in VectorWorks "unbeatable."

"The clear and simple data structure allows us to submit our proposals quickly," explains Bechtle. "VectorWorks Architect layers are worth their weight in gold. They make our work process very efficient. And, by using classes, we can change the look of our designs in a matter of minutes, even right before a presentation. That's what we love about VectorWorks."

"VectorWorks Architect layers are worth their weight in gold."

The firm also creates detailed 3D models of its designs from VectorWorks drawings, often presenting several variations as part of its competition submissions. Data is created in VectorWorks, then exported to create the components for each model.



Büro Henn

Henn Architects— a growing global presence

With its headquarters in Munich, the firm also has offices in Berlin, Shanghai, and Dubai. A full-service architectural firm with 190 employees, its scope of work includes not only building design, but also master planning and interior design. Dr. Gunther Henn is the office principal and CEO, and he also holds professorships at Boston's MIT and at the Technical University of Dresden (TUD).

The office makes use of space planning and programming analysis to keep its projects running smoothly. Programming is a form of mathematical optimization that determines the method of achieving the best outcome—such as maximum profit or lowest cost—given a set of requirements represented as a linear equation. For Henn Architects, the optimal outcome is a project that meets the needs of the client, delivered on time and within budget, using a specific workflow that defines the requirements of a project in the planning phase in cooperation with other partners and contractors.



"World of Sports", Adidas AG, Herzogenaurach

Flexible construction planning in 2D and 3D

Henn Architects finds the flexibility of working in both 2D and 3D in VectorWorks Architect useful in producing construction plans, as well. Collaborating with colleagues and foreign contractors isn't a problem either, thanks to VectorWorks' file translation capabilities.

"We use VectorWorks Architect for construction planning on all our projects, even our large ones, because we can easily exchange files with all parties involved—those in our other offices and our foreign contractors," says Rainer Sladek, head of the firm's media lab. "On our most recent projects, we've begun making construction plans in 3D."

Best-in-class CAD standards

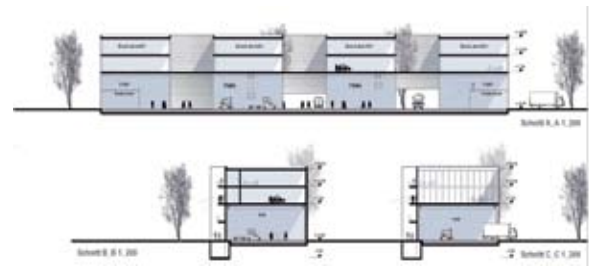
Henn Architects has been consistently pleased with VectorWorks Architect's superior CAD standards management capabilities. When working on larger projects, several of the firm's offices collaborate and use the same data structure. So working with consistent CAD standards is a given.

"For us, file exchange is never a problem with VectorWorks Architect."

Christian Bechtle explains the firm's process: "We define each floor as a layer, and specify class organization separately. This structure makes worldwide data exchange possible through DWG. For us, file exchange is never a problem with VectorWorks Architect. This standardized structure not only simplifies data exchange for Henn Architects, but is also an efficient way of creating plan layouts and varied detail drawings."



Realisierung der Central Bank, Qatar



Meeting international demands

On several projects in the Middle East and China, speed and simplicity were especially critical, according to Bechtle. These include the Dubai Crystal Tower and a new research and development center in HangZhou for Huawei Technologies Co., Ltd., a leading Chinese telecom equipment provider. The Dubai Crystal Tower is Henn Architects' biggest project to date. The 20-story, 800,000 square-meter luxury waterfront office tower in Dubai's booming Business Bay District is expected to be completed in 2009. The 190,000 square-meter R&D center for Huawei is part of an overall building area of 310,000 square meters and is expected to open in 2010.

"There's a lot of pressure from our foreign contractors to meet their deadlines, because they want quick results to meet the rapidly growing business needs of their clients," says Bechtle. "With the help of VectorWorks, we can react unbelievably fast to each demand—sometimes in real time, during meetings. Again, for us, the most important quality of a CAD program is simplicity—and VectorWorks always delivers."