



VECTORWORKS CASE STUDY



VECTORWORKS TURNS ARCHITECTURE INTO ART



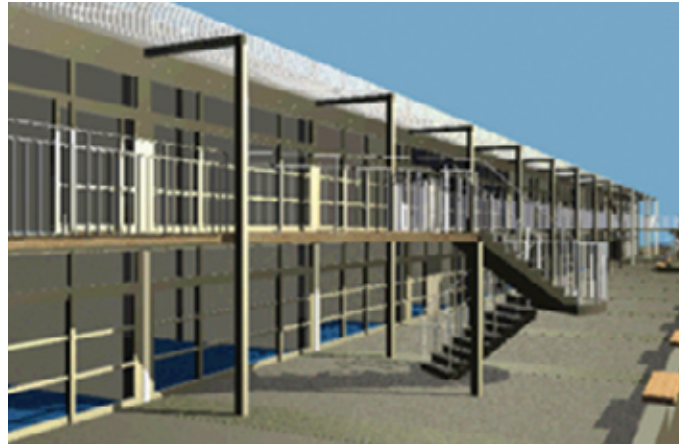
HAMPSHIRE COUNTY COUNCIL PROPERTY SERVICES USES 180 SEATS OF VECTORWORKS ON PROJECTS THAT SPAN 12 DISCIPLINES—FROM ARCHITECTURE TO ENGINEERING, TO URBAN DESIGN AND MORE. ONE OF THOSE PROJECTS WON A RIBA AWARD AND BECAME A PERMANENT ART INSTALLATION.

Many architectural structures go down in history as works of art. But how about architectural drawings? When Hampshire County Council Property Services undertook the design of one of the United Kingdom's largest secondary schools for children with special learning needs, the organization had no idea its VectorWorks design and construction drawings would be turned into art.

ARCHITECTURE AS ART

The £5.9 million, 3646 square-meter Lankhills Special Needs School demolition and Osborne School design and reconstruction was the subject of a three-year research project by British artists Trish Bould and Belinda Mitchell. With regular access to the construction site at Osborne School, Mitchell Bould collaborated with architects, engineers, construction contractors, and the school to explore relationships between drawing the construction process and a finished building.

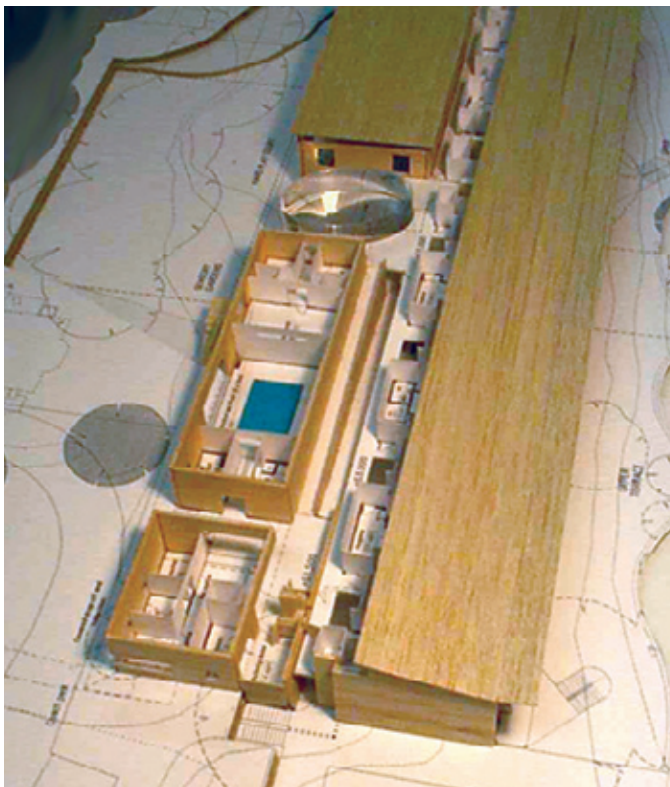
The result: Site Works, a permanent fixture in Osborne School's central atrium. The exhibit consists of 24 glass panels spanning 36 meters printed on the glazed balustrade running through the school's core, marking the many uses of drawing in every area and at every stage of construction.



HAMPSHIRE COUNTY COUNCIL PROPERTY SERVICES

Property Services handles a wide range of property and land management responsibilities for the Hampshire County Council, including:

- New building design
- Building refurbishment
- Corporate Estate health and safety risk assessment
- County Council building and site maintenance
- Land and property purchase, sale, and redevelopment
- Capital receipts generation
- Managing all County Council farms
- Managing Sir Harold Hillier Gardens, a 180-acre garden near Romsey

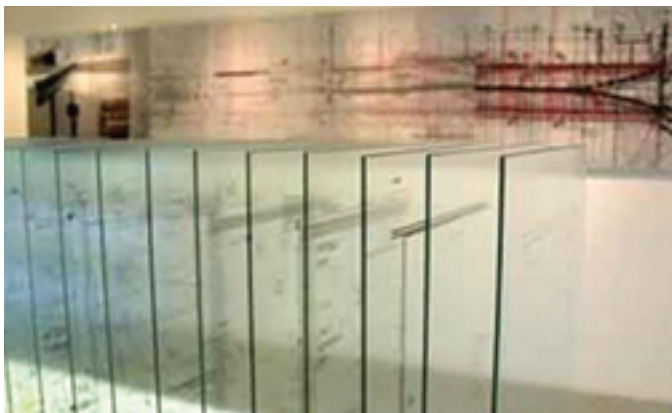


SETTING A GOOD EXAMPLE

Property Services encountered its own set of complex challenges to address in designing the new school for children with complex learning disabilities on the site of an existing structure.

The building had to cope with a sloping site, an adjacent railway cutting, a neighboring Romano-British cemetery, 800 mm city water mains crossing the site, and nesting piperstrelle bats. This led to a compact linear plan encompassing a "light" two-story classroom block addressing a playing field; a "heavy" communal/support space as a buffer to the railroad tracks; a central atrium ramp coupled with stairs; and an elevator as the central circulation. Externally, the building incorporated insulated fabric to exploit the thermal mass of the structure, as well as good daylight and passive ventilation.

"Being able to import and export between different CAD programs and design team members is essential, and using VectorWorks layers and workgroup referencing enabled us to easily differentiate among several consultants' AutoCAD drawings all within the same CAD file."



A 3D model of the building was built and used in conjunction with Art+Lantis to create a sun study. This helped determine the orientation and design of the brise soleil on the south elevation, as well as the lighting for the ramp and main circulation space.

"VectorWorks gave us the tools to avoid conflicts, communicate with and reassure the client about the appearance and type of spaces they would inhabit, and ensure a high level of accuracy, which enabled us to refine details with confidence and precision," says Andrew Coombes, CAD services manager in architecture and design services for Hampshire County Council's Property Services.

"VectorWorks gave us the tools to avoid conflicts, communicate with and reassure the client about the appearance and type of spaces they would inhabit, and ensure a high level of accuracy."

"In addition, layers and classes are extremely helpful for us in facilitating the seamless integration of services and structure, giving us a high degree of control over our drawings," he adds. "VectorWorks' 3D modeling and walkthrough capabilities help us explore junctions, spaces, and massing."

"VectorWorks' 3D modeling and walkthrough capabilities help us explore junctions, spaces, and massing."

The building has won a Commendation at the Civic Trust Awards, an RIBA Award, and a City of Winchester Trust Ltd. Design Award.

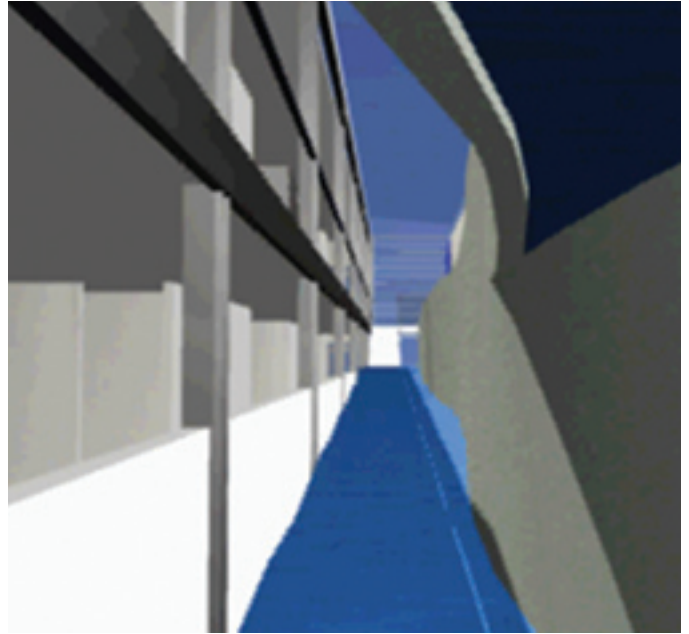
BEST IN CLASS

With a population of 1.25 million, Hampshire is the third largest shire county in England, behind Kent and Essex. Its economy is the second largest shire economy after Surrey. Hampshire County Council employs more than 30,000 staff.

With 180 seats of VectorWorks, Hampshire County Council Property Services uses CAD across 12 disciplines, from architects to engineers, to urban designers and more. Property Services began using CAD ten years ago, and chose VectorWorks –then MiniCAD–as the organization determined it was the best CAD application for architects working on the Macintosh®.

The council's property portfolio ranges from historic buildings to modern schools, libraries, retirement communities, social services buildings and office parks. The built estate totals more than 4,800 buildings and 1,340,000 square meters of floor area.

"VectorWorks has remained our preferred program, because it is so easy to use and produces great-looking presentation drawings."



Property Services also operates a customer services center, which provides 24-hour repair and maintenance service for all County Council buildings.

"VectorWorks has remained our preferred program, because it is so easy to use and produces great-looking presentation drawings," says Coombes. "Not to mention, retraining 180 people to use another application would represent an enormous undertaking."

